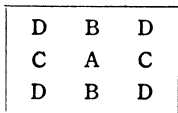


Mechanical Test

Operating Noise (at 1 meter distance) 63 phon
 Guide Rail Pressure (by film tension) 110 g
 Take-up Tension 110 g
 Film Speed OK
 Scratch Test on Film OK

Visual Test

Picture Steadiness Vertical 0.1 %
 Horizontal 0.1 %
 Resolving Power of Lens (with test chart)
 Position A 160 lines/mm
 B 126
 C 100
 D 80
 Center Illumination (for 1 meter wide picture) 1 000 lx
 Illumination Ratio between Corner to Center 70 %



MODEL

SC-10M

SERIAL No.

52773

RATING

AC 220V

50-60Hz

LENS 50 mm

165593

LAMP 24V-250W

Manufacturer's Inspector

DATE

22 JUL. '80

N. Yashizawa

TEST RESULT

Electric Test

Motor Starting Voltage (at 50Hz)	170 V
Motor Current (at rated voltage)	0.7 A
Amplifier Current (at rated voltage)	0.09 A
Insulation Resistance	1 000 M Ω
Dielectric Strength (AC 1000V for 1 minute)	OK

Sound Test

Amplifier Output Power (with 400Hz test film)	12.7 V
Sound Focusing (with 7000Hz test film)	9.5 V
Scanning Beam (with Buzz-Track test film)	OK
Distortion (with 400Hz test film)	2.3 %
Frequency Response	
(50~7000Hz, with multifrequency test film)	OK
Signal-noise Ratio (at $\frac{1}{2}$ rated output)	56 dB
Flutter (with Flutter test film)	0.25 %
Magnetic Recording	
Erasing	
Magnetic Reproduction	OK
Distortion (with Mag. 400Hz Test Film)	0.6 %
Signal-noise Ratio (Magnetic)	42 dB
Magnetic Flutter	0.3 %

AGA-BALTIC
TYP 699114
1953
9-12-1991

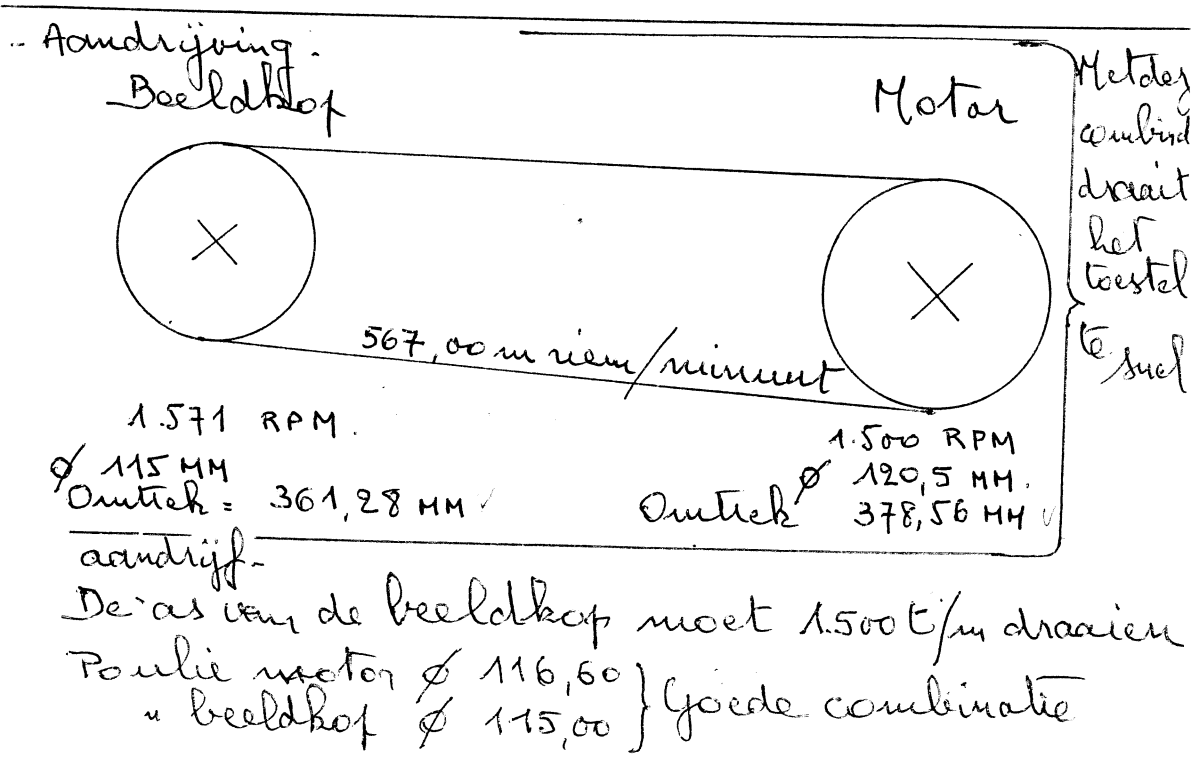
N° 442059

P 35

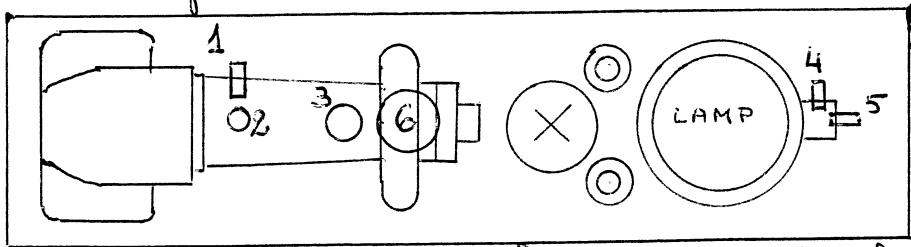
TOONKOP: AGA-BALTIC STOCKHOLM SWEDEN
TYP 691127 N° 442596
TONTILLSATS ULTRAPREMIÄR
FOTOCCELLHOUDER 490137 LEESLAMP 8,5V 2x3A (2 GLOEIDRADE)

LANTAARN: REINARC N° 404 TYPE 400
COURANT = VOLTS 3032 AMP 3075
ROBERT JULIAT, CONSTRUCTEUR
24, RUE DE TRÉVISE - PARIS PHOTAL DAMIEN

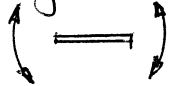
AGA-BALTIC STOCKHOLM LIDINGÖ SWEDEN



- Toonkorf.



Horizontaal regelen van de optische spleet:

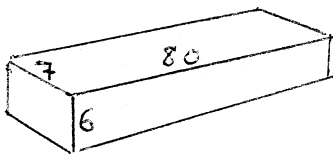

 hiervoor dient een lichtbron
 aangebracht te worden in het
 fotoeelhuis, dan kan men de spleet zien in
 het venstertje 3.
 Schroef 1: blok/deblokker van schroef 2
 " 2: regelvijs.

lichtsterkte: schroef 4: blok/deblokker schroef 5
 " 5 regelvijs.

Wanneer de toonlamp brandt terwijl er zich een
 blankfilm of de toonkorf bevindt kan men in het
 venstertje 3 de blankjeste zien.

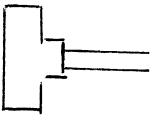
De aflezing kan centraal afgesteld worden met
 knop 6

Afnemen toonkorf: hiervoor moet het vliegwiel van
 de toonkorf afgesloten worden nadat de
 gekortelde rubber losgedraaid is. Deze bewerking
 kan slechts gebeuren met geopende rug van de
 beeldkorf.



2 rubberen balkjes tussen
 toon- en beeldkorf gekneld.
 6 x 7 x 80 (maten in mm)

- Beogram
 Motoc
 - Aandrijfs



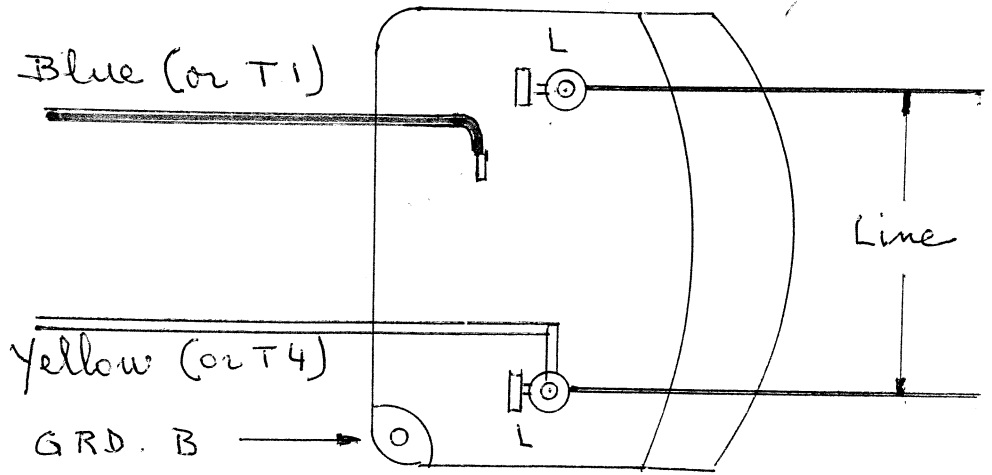
dik van
 3-dun
 rond

- De beeld
 wanneer
 eruit lof

iten terwijl
C Motor.

General Electric
Connections for
Single Voltage, Single speed, either rotation

H 1
Ter met
2 ZIVY Paris:
1.500 RPM
1.483 "



f duty service
- for light
2 under
il
bearing end
core shaft

When GRD required attach to GRD A or B
with # 6 THD - forming screw.

Connection shown is for ccw rotation
viewing lead end of motor for cw rotation
interchange blue (or T1) and yellow (or T4)
leads.

No 219500 Fort Wayne Indiana made in USA.